

## ASX Announcement

ASX: Li3

18 September 2017

### Botswana Update: Sampling Program Commenced

- **A shallow pit and handheld auger drill hole sampling program has commenced**
- **Botswana lithium brine resource potential being investigated**
- **SRK designed the sampling program**
- **Sampling program will define areas for initial drilling and deeper sampling**

Lithium Consolidated Mineral Exploration Ltd (“LCME”) has commenced a sampling program to investigate the lithium brine resource potential at the Botswana licenses.

SRK Consulting (U.S.), Inc. (“SRK”) designed the sampling program.

Given the salty crust of the Pans and shallow depth to brine, SRK recommended reaching the top of the brines through a combination of shallow pits (i.e. 2m x 2m x 2m) and handheld auger drilled holes.

A total of 10 sites in the Makgadikgadi Pans in north-eastern Botswana have been selected for sampling (as shown by the ‘red areas’ on the map in Figure 1).

The Pans in the greater Makgadikgadi basin have the lowest elevation in the Kalahari basin at 890 meters above sea level, making it the final collection point for all the rivers and streams within the basin.

These waters have carried dissolved material into various ephemeral lakes on the Pans, since the Tertiary period (+5 million years ago).

The unevaporated water percolates into the subsurface where over time the dissolved material is increased to the point of forming a brine with the salts of elements such as lithium, boron potassium and other salts through a process of concentration.

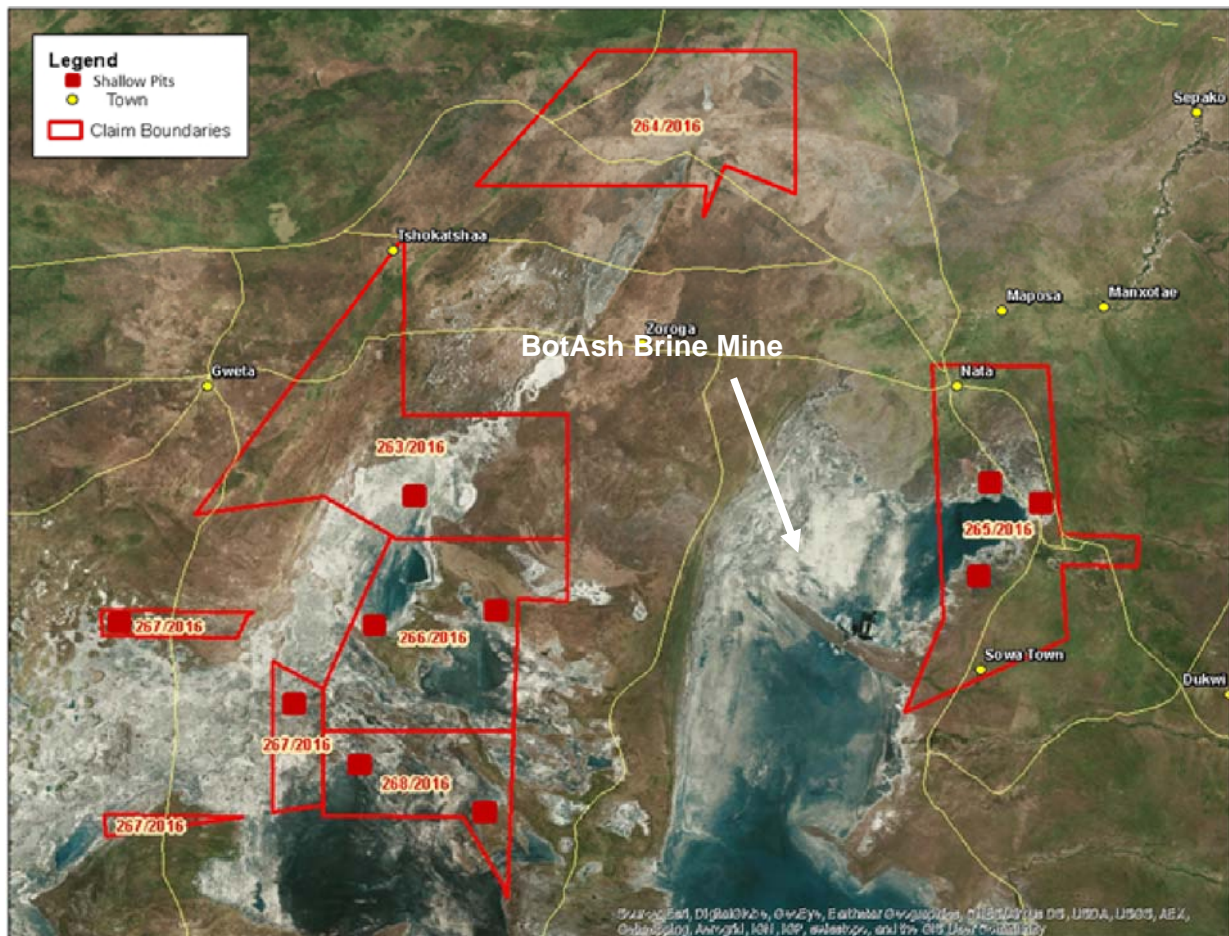
The brine samples collected from each site will be shipped to a lab in Randfontein, South Africa for chemical assays.

The sampling program is designed to provide:

- a ‘top of brine’ geochemical signature including pH, density, electrical conductivity, total dissolved solids (TDS), and temperature;
- detailed lithological description; and
- the depth to the ‘top of brine’ (as measured below the surface of the Pan).

The results from the sampling program will be used to define areas of interest for initial drilling and deeper sampling.

**Figure 1: Botswana Prospecting Licenses**



Source: SRK

**For more information, please contact:**

**Duncan Cornish**

Company Secretary

Phone: +61 7 3212 6299

Email: [investors@lithiumconsolidated.com](mailto:investors@lithiumconsolidated.com)

Please visit us at: [www.lithiumconsolidated.com](http://www.lithiumconsolidated.com)

**Cautionary Statements**

**Forward-looking statements**

This document may contain certain forward-looking statements. Such statements are only predictions, based on certain assumptions and involve known and unknown risks, uncertainties and other factors, many of which are beyond the company's control. Actual events or results may differ materially from the events or results expected or implied in any forward-looking statement.

The inclusion of such statements should not be regarded as a representation, warranty or prediction with respect to the accuracy of the underlying assumptions or that any forward-looking statements will be or are likely to be fulfilled. LCME undertakes no obligation to update any forward-looking statement to reflect events or circumstances after the date of this document (subject to securities exchange disclosure requirements).

The information in this document does not take into account the objectives, financial situation or particular needs of any person or organisation. Nothing contained in this document constitutes investment, legal, tax or other advice.