



Exploring for world class discoveries in the **Yalgoo Region**

June 2021

ASX:TEM





- Any material used in this presentation is only an overview and summary of certain data selected by the management of Tempest Minerals Ltd (“TEM”).
- The presentation does not purport to contain all the information that a prospective investor may require in evaluating a possible investment in TEM nor does it contain all the information which would be required in a disclosure document prepared in accordance with the requirements of the Corporations Act and should not be used in isolation as a basis to invest in TEM. Recipients of this presentation must make their own independent investigations, consideration and evaluation of TEM.
- TEM recommends that potential investors consult their professional advisor/s as an investment in TEM is considered to be speculative in nature.
- Statements in this presentation are made only as of the date of this presentation unless otherwise stated and the information in this presentation remains subject to change without notice. Reliance should not be placed on information or opinions contained in this presentation.
- To the maximum extent permitted by law, TEM disclaims any responsibility to inform any recipient of this presentation on any matter that subsequently comes to its notice which may affect any of the information contained in this document and presentation and undertakes no obligation to provide any additional or updated information whether as a result of new information, future events or results or otherwise.
- No representation or warranty, express or implied, is made as to the fairness, accuracy, completeness or correctness of the information, opinions or conclusions contained in or derived from this presentation or any omission from this presentation or of any other written or oral information or opinions provided now or in the future to any person.
- To the maximum extent permitted by law, neither TEM nor, any affiliates, related bodies corporate and their respective officers, directors, employees, advisors and agents, nor any other person, accepts any liability as to or in relation to the accuracy or completeness of the information, statements, opinions or matters (express or implied) arising out of, contained in or derived from this presentation or any omission from this presentation or of any other written or oral information or opinions provided now or in the future to any person.

Competent Persons Statement

The scientific and technical information contained within this Presentation is based on, and fairly represents information prepared by Mr Don Smith, a Competent Person who is a Member of the Australian Institute of Mining and Metallurgy (Ausimm) and Australian Institute of Geoscience (AIG). Mr Smith is the Chief Executive Officer of Tempest Minerals Ltd and has sufficient experience that is relevant to the style of mineralisation and type of deposit under consideration and to the activity being undertaken to qualify as a Competent Person as defined in the 2012 Edition of the “Australasian Code for Reporting of Exploration Results, Mineral Resource and Ore Reserves”. Mr Smith consents to the inclusion in this presentation of the matters based on his information in the form and context in which it appears.

Corporate Overview



Directors and Management



BRIAN MOLLER

Non-executive Chairman

Brian has been a partner at the legal firm HopgoodGanim for 30 years and leads the Corporate Advisory and Governance practice. Brian is a Non-executive director of ASX listed DGR Global Ltd and Dark Horse Resources Ltd; Chairman of ASX listed Aus Tin Mining Ltd, Platina Resources Ltd; and a director of LSE listed SolGold PLC.



DON SMITH

Managing Director

Don Smith is a Geologist and entrepreneur with over 20 years in the mining industry. He has worked roles for junior through to multinational firms on projects spanning 6 continents and numerous commodities. Don has been involved with a number of private and publicly listed resource companies including as a founding director of Platypus Resources and as a director of Alderan Resources.



VINCENT MASCOLO

Non-executive Director

Vincent Mascolo is a qualified Mining Engineer with extensive experience in a variety of fields including, gold and coal mining, quarrying and civil-works. Vincent is a member of both the Australian Institute of Mining and Metallurgy and the Institute of Engineers of Australia. Vincent is the CEO of AIM listed IronRidge Resources Ltd and a Non-executive Director of ASX listed DGR Global Ltd.



ANDREW HAYTHORPE

Non-executive Director

Andrew Haythorpe has 30 years experience in geology, funds management and has been a Director and Chairman of a number of TSX and ASX listed companies. Andrew has been involved in over A\$300 million of mergers, acquisitions and capital raisings. More recently Andrew was the Managing Director of Crescent Gold, and Managing Director of Michelago Resources.



OWEN BURCHELL

Non-executive Director

Owen Burchell is a Mining Engineer with 20 years of technical, operational and corporate experience including management positions at Rio Tinto, BHP and Barrick Gold through to numerous mining start-ups, closures and operational turnaround projects. Owen is currently a director of several private resource companies.

ASX Code

TEM

Shares on Issue

271.8m

Share Price

\$0.020

Cash (31 Mar 21)

\$1.43m

Debt

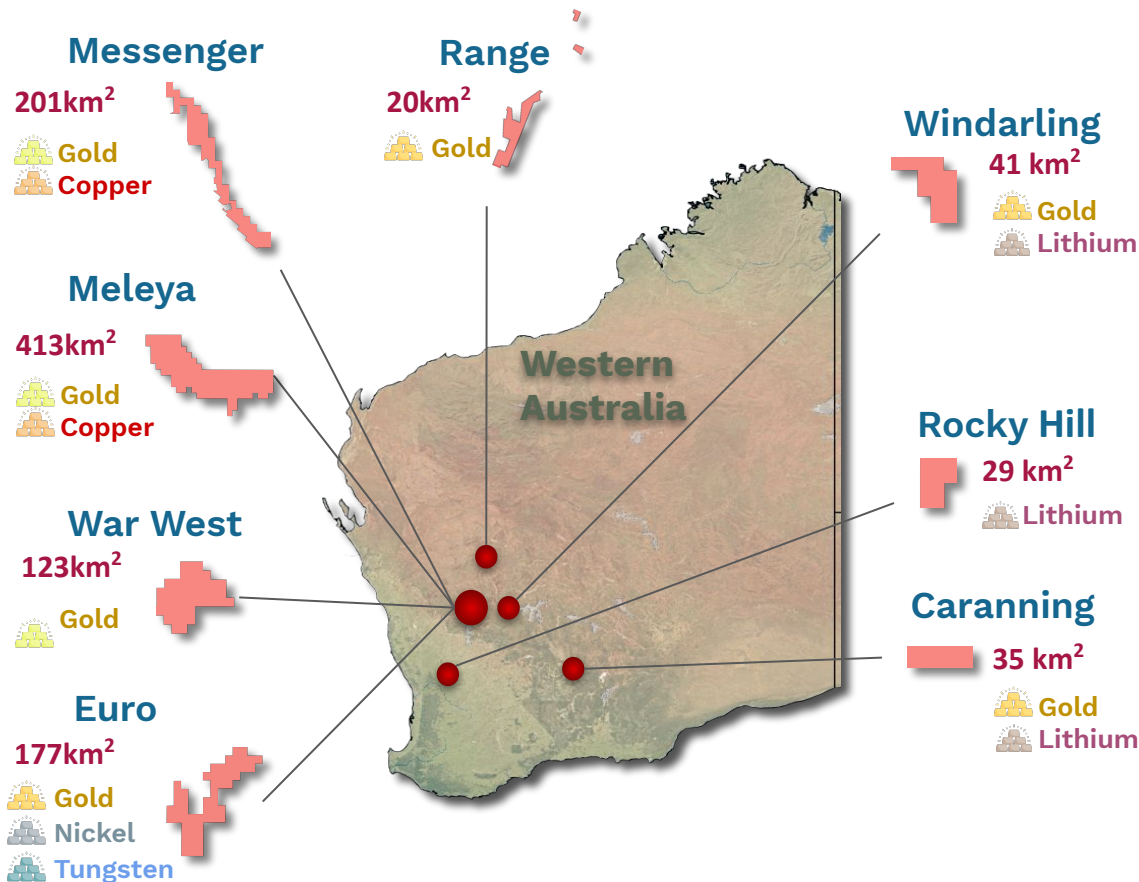
\$0m

Market Cap

\$5.4m

Rank	Top Shareholders	Holding (8/4/21)
1	V-DOOR PTY LTD	10,280,372 shares
2	GALT INDUSTRIES PTY LTD	9,902,577 shares
3	MR ANTHONY DE NICOLA & MRS TANYA LOUISE DE NICOLA	7,250,000 shares
4	HSBC CUSTODY NOMINEES (AUSTRALIA) LIMITED	5,608,932 shares
5	MR MICHAEL PEREIRA	4,300,000 shares
	TOP 20	32%

Project Overview



Yalgoo Projects

- Contains the Messenger, Meleya, War West and Euro projects.
- ~900km² tenure across the 4 projects.
- Immediate proximity to Golden Grove (EMR), Yalgoo (Firefly), Rothsay Gold Project & Deflector Copper-Gold Project (SilverLake) and Minjar Gold Mine (Jinan Hitech)
- **Upcoming drilling at the Euro Project**

Mt Magnet Projects

- Contains the Range Gold Project in a region with >6Moz past gold production.
- On the same gold trend as Westgold's 8Moz Cue Operations & Ramelius' 5Moz Magnet Operations.
- New geological modelling strengthens project potential.
- **Target zones at Range to be drill tested across the next 18 months.**

Yalgoo Projects



Yalgoo: world class area yet underexplored

- ★ Major infrastructure: (rail, roads, power, communications, water)
- ★ 400 km from Perth: (low cost, high impact exploration)
- ★ World class mines: (EMR Golden Grove, Mt Gibson ASX:MGX Shine, Silverlake ASX:SLR Rothsay, Karara Iron Ore, Tungsten Mining ASX:TGN Mt Mulgine)
- ★ Recent activity: (Firefly ASX:FFR and Gascoyne ASX:GCY Merger, EMU ASX:TMX Gnows Nest, Terrain ASX:TMX Yidby)

Euro: Potential for production



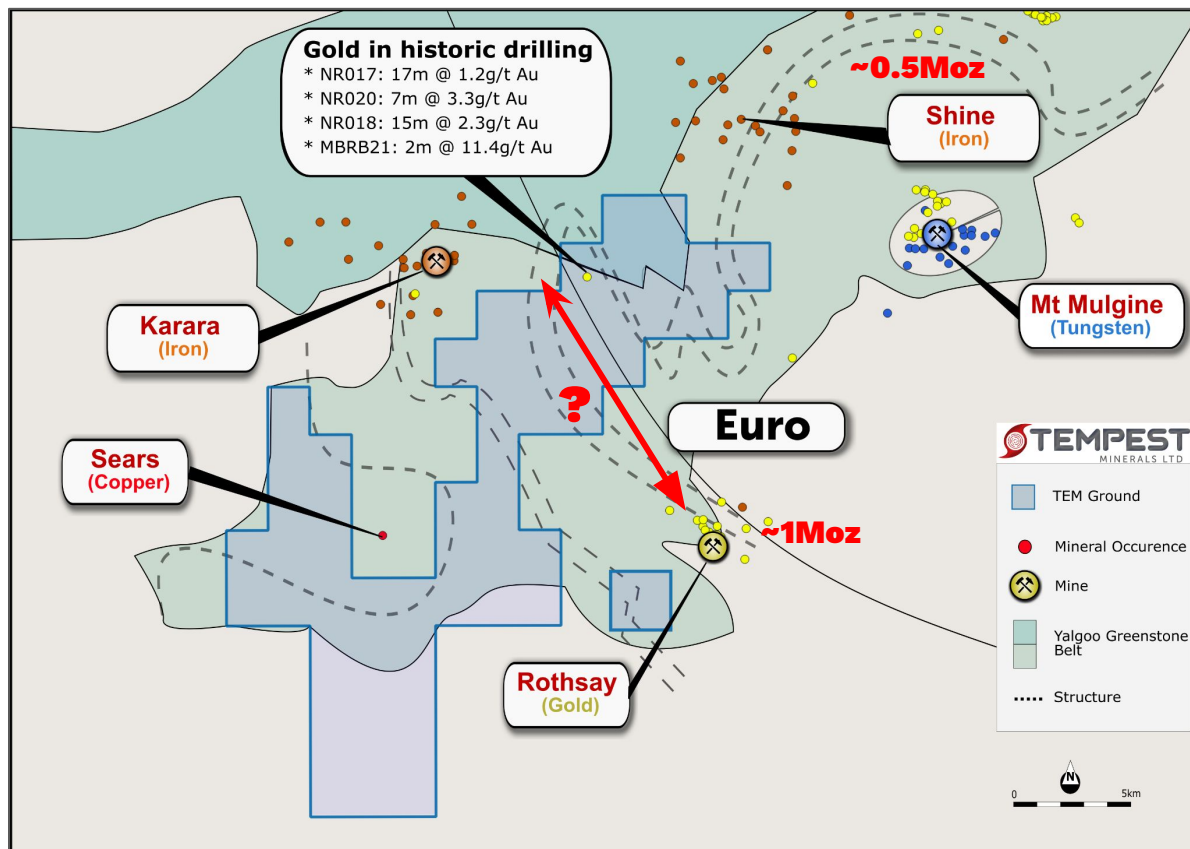
Extending the trend

- High grade intercepts drilled in 1990's and 2000's never followed up
- Anomalous gold over 1km strike length including:
 - 15m @ 2.3gpt gold
 - 2m @ 11.4gpt gold
- New data shows trends missed by previous explorers
- Multiple targets untested

Possible shallow open pits

- High grade, shallow depth and nearby processing facilities provide a compelling path to production
- **Drilling planned for FY2021-22**

HOLE ID	DEPTH	INTERVAL
NR017	20m	17m @ 1.2g/t
NR020	20m	8m @ 0.9g/t (including 5m @ 1.3g/t)
NR018	15m	15m @ 2.3 g/t (including 7m @ 3.4g/t)
MBRB21	0	2m @ 11.4 g/t



* DMIRS WAMEX reports A48951, a65803

Euro: New and Old Trends



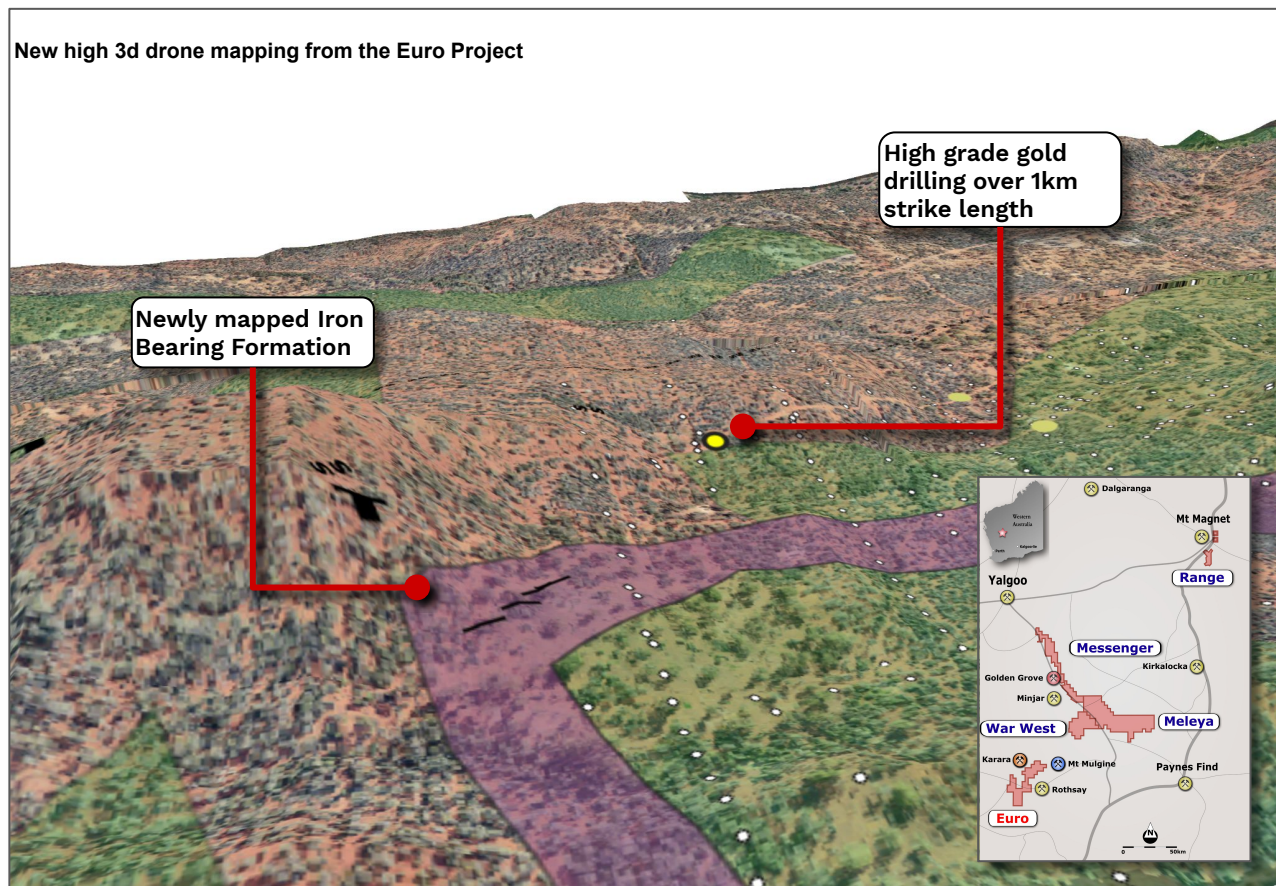
Multiple Targets

- New exploration targets generated by in house technology
- Field work and surface sampling commenced
- Multiple targets untested
- **Drilling planned for FY2021-22**

More irons in the fire

- Newly mapped layered iron units outcrop over more than 2km strike
- Favourable gold bearing unit
- Prospective for iron ore

New high 3d drone mapping from the Euro Project



Meleya: Golden Grove Analogue



Golden Grove Extension?

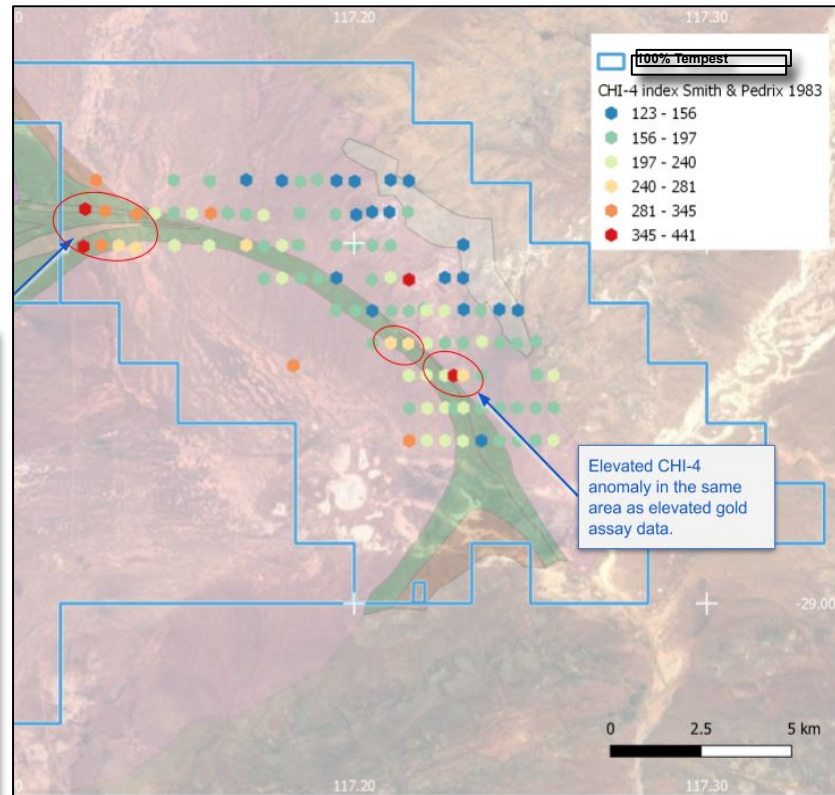
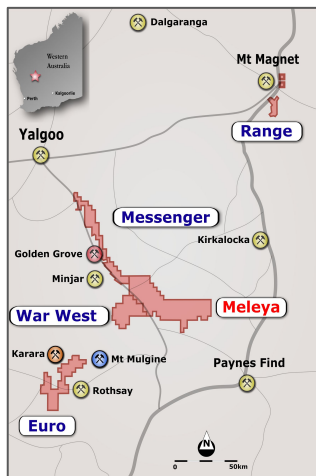
- **New terrain** - Previously unexplored Yalgoo Greenstone belt
- **Along strike** from Golden Grove Copper-Zinc-Lead-Gold-Silver VMS

2020

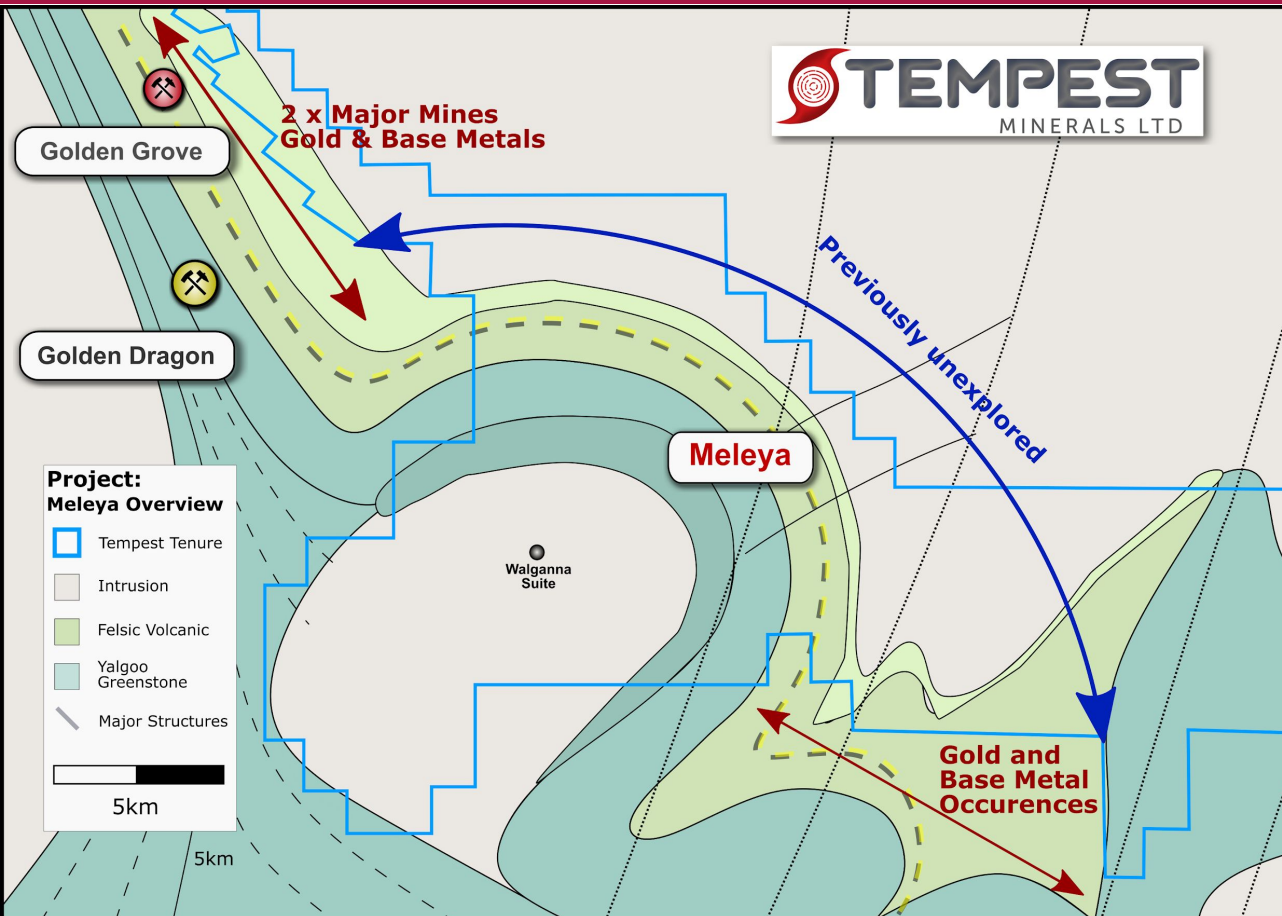
- New high resolution magnetics give **unparalleled regional detail**
- Extensive regional geochemistry and mapping with **confirmed prospectivity**

2021

- Ongoing data analyses and modelling
- Numerous **drill targets** identified
- Drill approval and planning in progress



Meleya: The Goldilocks Zone



Golden Grove Analogue

- Recent discovery of key geology (Yalgoo Greenstone Belt and Golden Grove Volcanics)
- No previous leases and never explored
- Strong geophysical and geochemical signature
- **One of the most exciting exploration targets in Australia today**
- **Numerous drill targets to be tested from Q4 2021.**



War West: Gold Discovery - Nearby Mills



Recent exploration success

- **Discovery:** New gold bearing veins discovered at Wee Lode
- **Discovery:** Widespread shallow gold <18km from major processing facility
- **Discovery:** New shallow greenstone belt with same signature as nearby major mines

Minjar

- Underutilised 0.8 Mtpa mill capacity

Wee Lode

- Recent oxide gold and greenstone belt discovery

War West: Continuing The Discovery



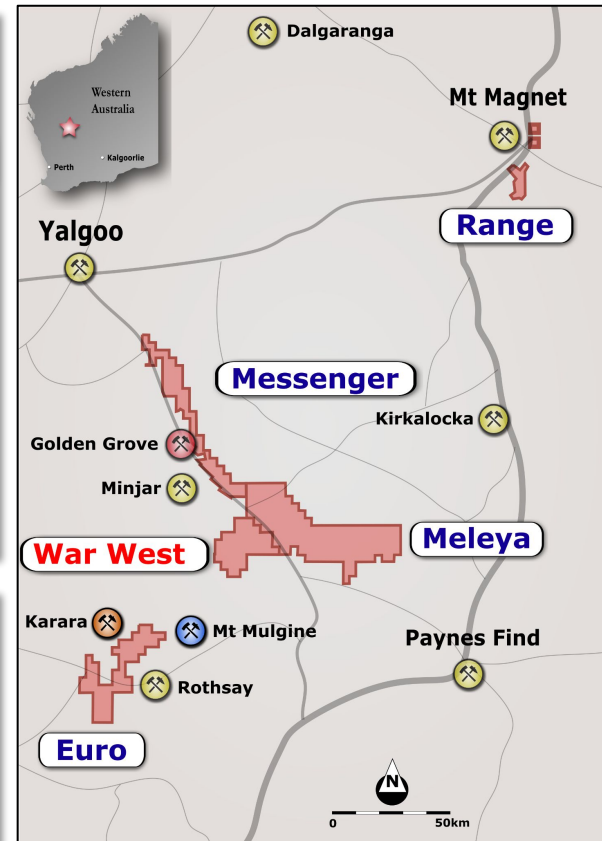
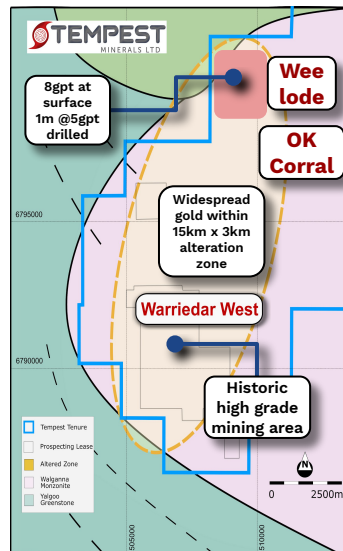
Intrusive Related System

- Area of historic high grade alluvial nugget and vein gold production
- Multiple kilometre scale gold anomalies within 15km x 3km alteration zone
- Intrusive potential highlighted by DeGrey Mining (ASX:DEG) Hemi Discovery and Northern Star (ASX:NST) Pogo Mine

Upcoming Works

- Study of surface gold geochemistry in progress
- Further drilling in planning

* ASX release 15 Jan 2021 "Exploration Update - Further gold intersected at Warriedar



Messenger: Proximity and Pedigree

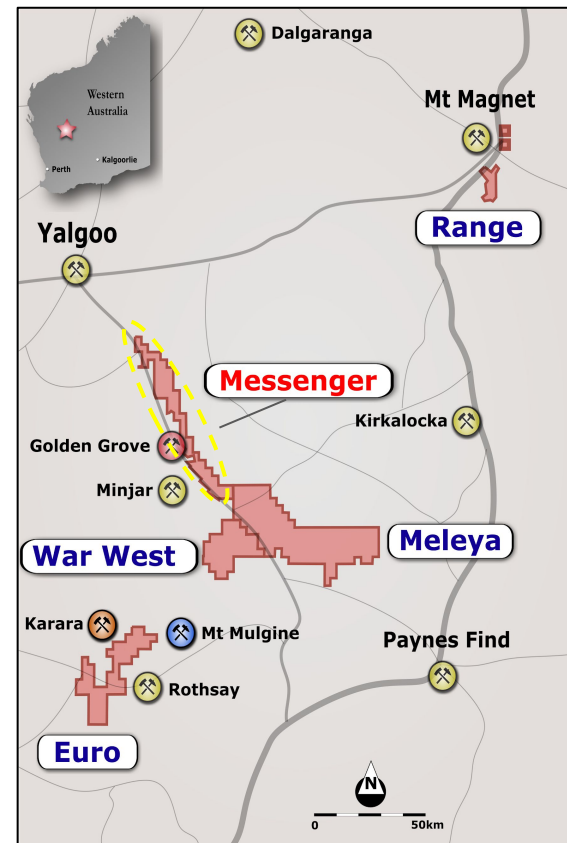


Outstanding Location

- Located in a established gold province in Western Australia
- 200 km² of wholly owned tenements
- Nearby mines:
 - Golden Grove gold and base metals mine (EMR Capital)
 - Rothsay gold mine (SilverLake)
 - Minjar gold mine (Jinan Hi-tech)
 - Deflector gold-copper mine (Silver Lake)
- Nearby exploration / discoveries
 - Mt Mulgine tungsten project (Tungsten Mining)
 - Yidby gold project (Surefire Resources)
 - Yalgoo gold project (Firefly Resources)
 - Golden Grove North (Venture Minerals)

Untapped Potential

- Lode hosted gold and VMS potential across the project
- Gold discovered in 1907 with several producing operations
- Lies on a known mineralised trend with numerous discoveries



Range: Part Of The Big One

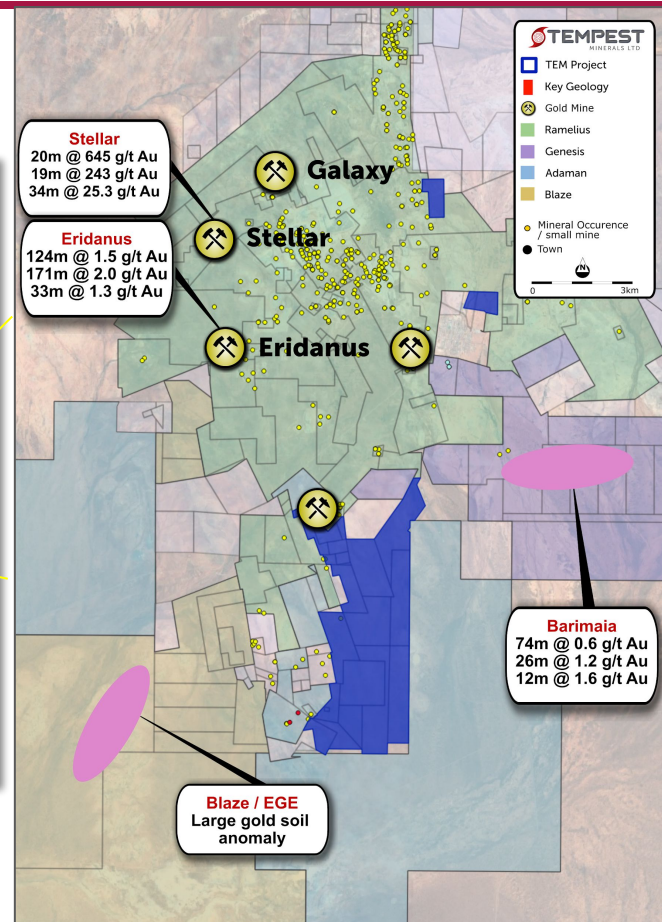
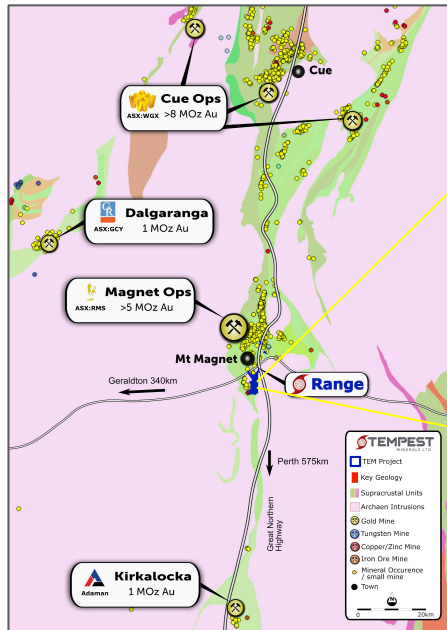


World Class Location

- Prolific gold region - >6Moz historical production in Mount Magnet alone.
- Adjacent success stories include:
 - Ramelius ASX:RMS
 - Genesis ASX:GMD
 - Westgold ASX:WGX
 - Blaze ASX:BLZ
- New geological models for the region include Intrusion Related Gold which further increases the prospectivity of the area

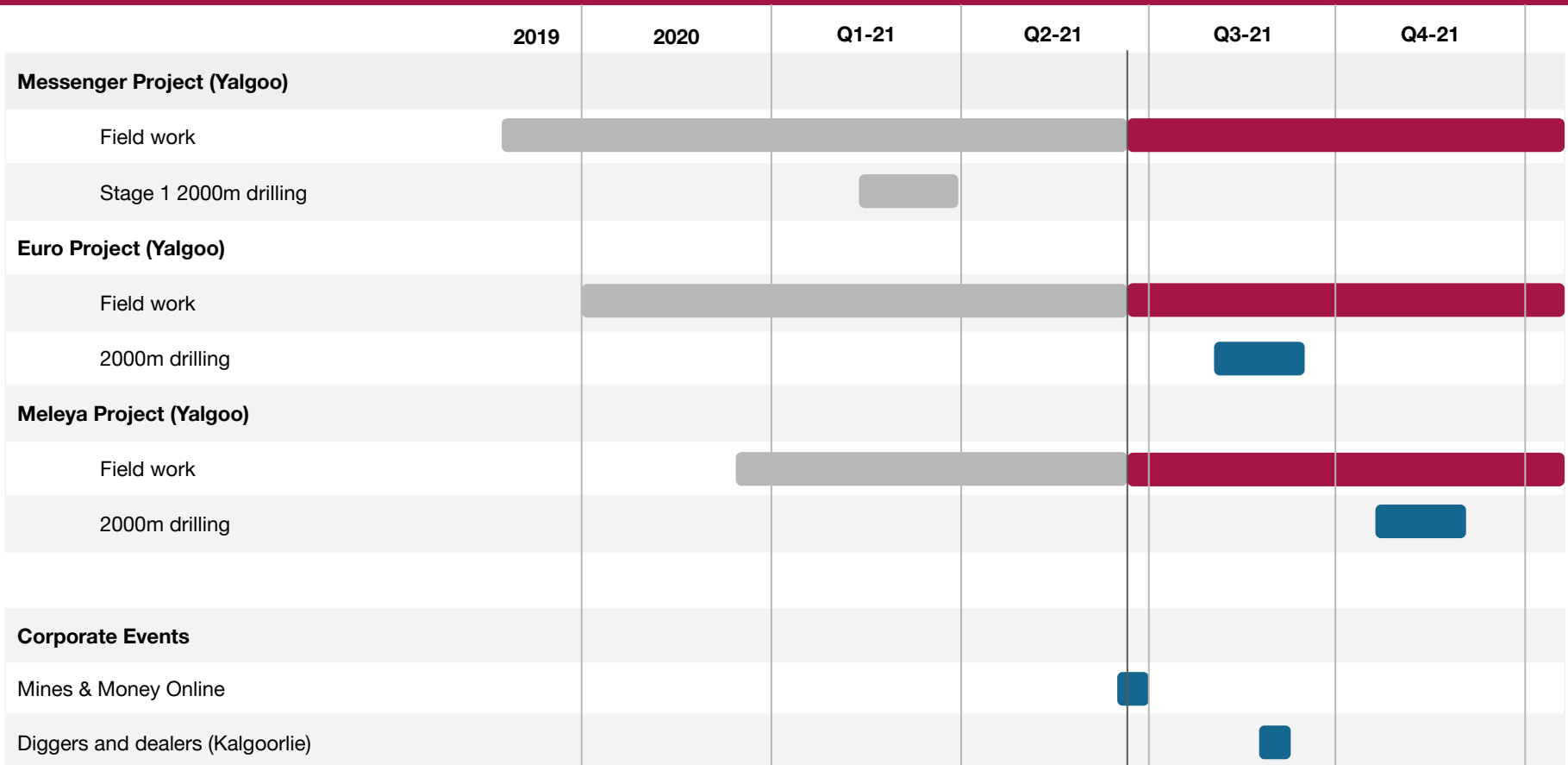
Surrounded by Gold

- Tenements adjacent to Ramelius' Mt Magnet operations to the north and west.
- Mill 5km away
- Undocumented historic workings along strike from
- Wide spread mineralized shears, intrusives and alteration confirmed in recent field work
- Target zones visible in geophysics to be drill tested in 2021-22



2021 Activities Plan

Completed
 In progress
 Planned





Level 2, Suite 9,
389 Oxford Street,
Mt Hawthorn
Western Australia 6016



+61 8 9200 0435



info@tempestminerals.com



Tempestminerals.com



Tempest Minerals



Tempest Minerals



Tempest Minerals



Tempest Minerals